


Quantum Sound Therapy



Miracle iQube

U S E R M A N U A L

Miracle Setup

Take the smaller end of the USB charging cable (marked with green) and plug it into the back of the Miracle unit. The larger end plugs into the USB charging adapter.

The female end of the audio splitter connects to the male adapter on the front of the unit. Next, take the male end of the audio splitter and connect it to your audio player. The other cord coming from the unit also connects to the audio player. Slide the audio player into the holder and place it on the front of your Miracle unit above the cords. It will attach magnetically. Hold in the power button on the top left of your player for three seconds to turn it on.

Take the USB charging adapter and plug it into your wall electrical outlet. This will continuously charge your player. Tap the power button on your player if you need to wake it up. The player is already playing the Miracle track. The volume is pre-set to 60 and that is where you should keep it. The buttons below the top power button of your player control the volume. See the included player instruction for more information on using your player.

In a few seconds, the red lights on the top of your Miracle will come on which means that you've connected everything properly.

Take your audio cable and connect one end to the second female end of the splitter coming out from your unit. There's a blue dot on your speaker to show you where the flap is for your connections. One of the connections is for the audio cable and the other is for charging. Take the other USB charging cable (marked with blue) and connect one end to your speaker and the other to your USB charging adapter. Long press the power key on the speaker to turn it on. You can control the volume with the plus and minus buttons on the side of the speaker. Use these to control the volume but leave the player volume set at 60. If you don't want to listen to the speaker just turn it off or disconnect the splitter. The Miracle unit still produces energy without listening to the audio. The unit is working when the red lights are flashing.

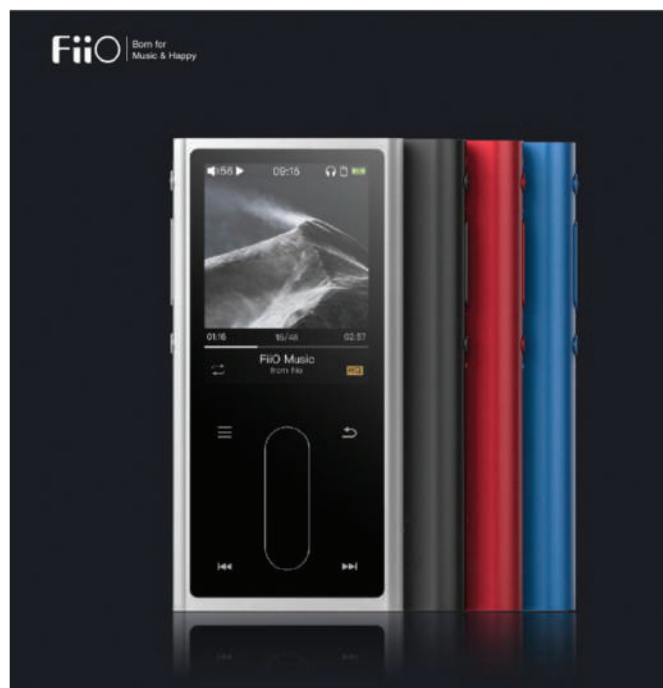
Your setup is now complete.

Component Overview



Quick Start Player Guide

Welcome! This Quick Start Guide will help you begin using your hifi audio player as quickly as possible. The audio player is preset for immediate use with your device. Please refer to the video and support links below for more in-depth information.



Quick Start Video:

https://youtu.be/-1_iKAE5zvs

Complete User Guide:

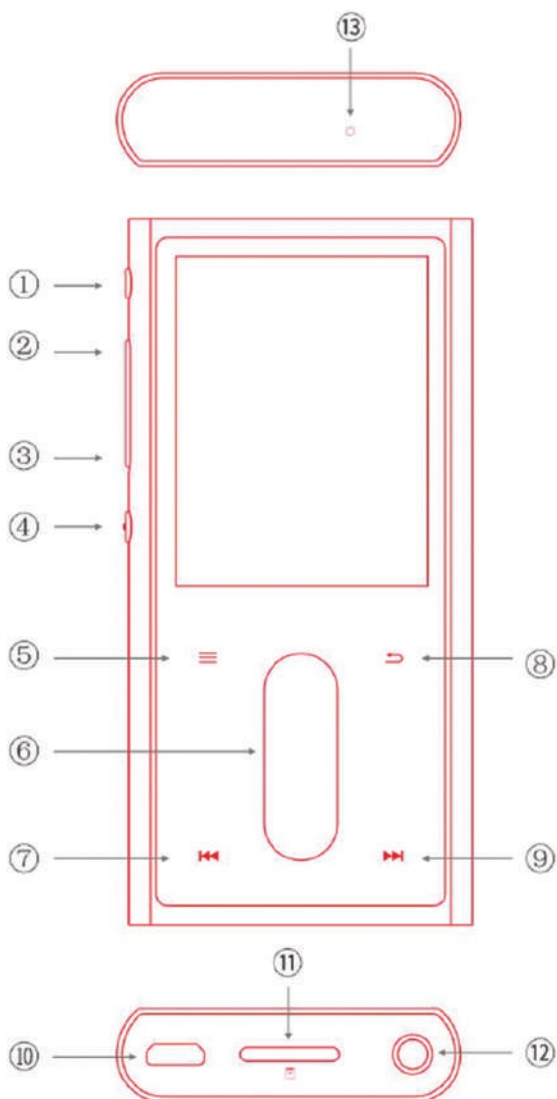
https://s3.amazonaws.com/QST/Instructions/M3K_complete_user_manual_EN.pdf

FiiO M3K Support & Firmware:

https://fiio.com/m3k_faq

Quick Start Player Guide

Player Overview

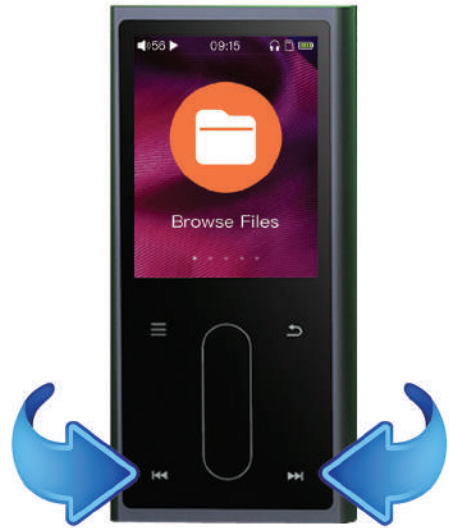


- ① Power/lock button
- ② Volume up
- ③ Volume down
- ④ Confirm button
- ⑤ Shortcuts button
- ⑥ Touch bar
- ⑦ Up/Prev.track/Rewind
- ⑧ Back
- ⑨ Down/Next track/Fast forward
- ⑩ USB transfer/Charging
- ⑪ Micro SD card slot
- ⑫ Headphone out jack
- ⑬ Microphone

Quick Start Player Guide



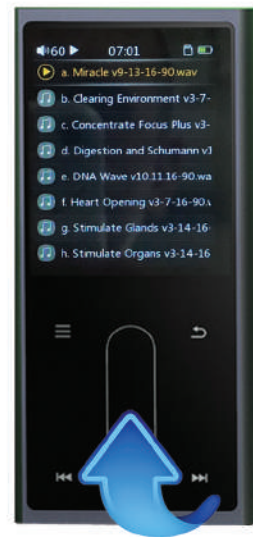
1. Press the Power button.
Top left, on the left side.



2. Use the Next Track and
Previous Track buttons to
highlight Browse Files folder.



3. Tap the Select/Play/Pause
button to browse music.



4. The soundtracks are
pre-loaded and will contain “AM”
or “PM” in the title. Highlight the
desired folder and press
Select/Play/Pause twice to play.

Quick Start Player Guide

Lock/Unlock

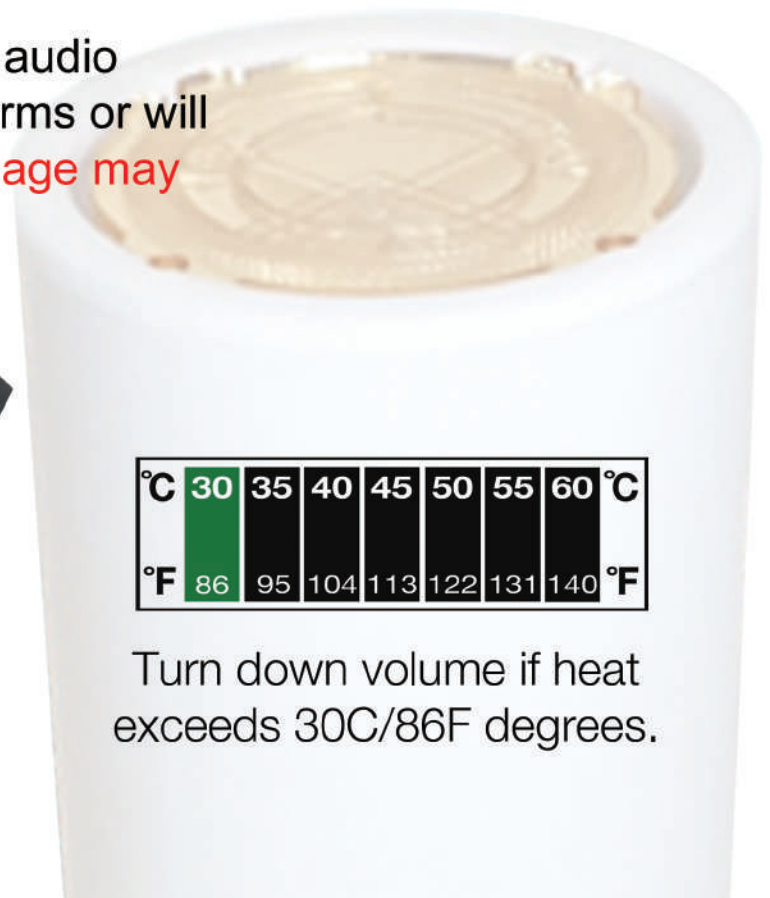
The power key will lock and unlock the front control buttons. Side volume control and Play/Pause key will still function while lock is enabled.



Volume Level:


60 ≤

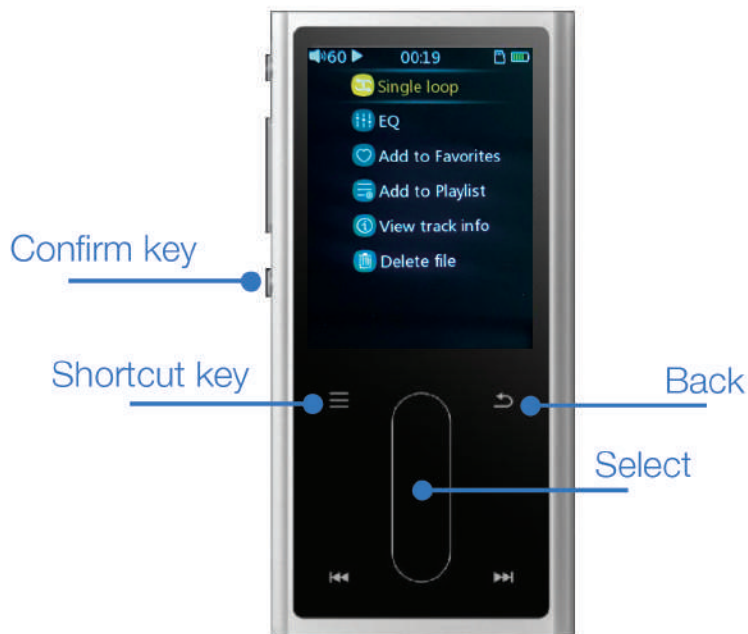
! Using other players or audio input may distort waveforms or will cause overheating. **Damage may occur!**



Quick Start Player Guide

Setting Repeat Options

1. Ensure a soundtrack is playing.
2. Tap the Shortcut key  to access the Shortcut Menu.



3. Tap the Select/Confirm button repeatedly until the desired repeat function is on the screen. Single Loop will repeat one audio track. Loop Play will play through the AM or PM folder and loop continuously.

4. Complete! Tap the Back key to return to your current track screen.

Quantum Structured Water



Blending Instructions

1. MIX one ounce or more of Quantum Concentrate to 1 gallon of distilled water. Each bottle will make 8 gallons.
2. PLEASE VIGOROUSLY SHAKE THE CONTAINER FOR A FEW SECONDS. Cooler temperatures are beneficial. You can increase the amount of concentrate to increase the potency of your beverage. For maximum power and best results, we suggest mixing 1- 2 ounces of concentrate to one gallon of distilled water.
3. Use a 1-ounce plastic measuring cup or the cap of the water bottle (2) to add concentrate to distilled water (or high-quality spring water). Distilled water has been stripped of all memory and hard particles that interfere with frequencies. The frequencies have been added to the water so they act as a tuning fork in the body.

Quantum Structured Water Suggested Practices

Dehydration can be a major health problem. Our water super-hydrates and, if given a choice, should be the only water you drink. We recommend drinking at least two gallons per week. As Quantum Structured Water liberates energy, we recommend that you consume SUPERCALM PM structured water after 6 PM.

Quantum Structured Water has the correct structural geometry to perfectly penetrate the membranes of cells and deliver the ingredients. We encourage you to drink or mix our water with any food, herbal shakes, protein powders, herbs, or vitamin supplements to boost the body's ability to absorb healthy nutrients.